



ISTROS AND BEIDAUD

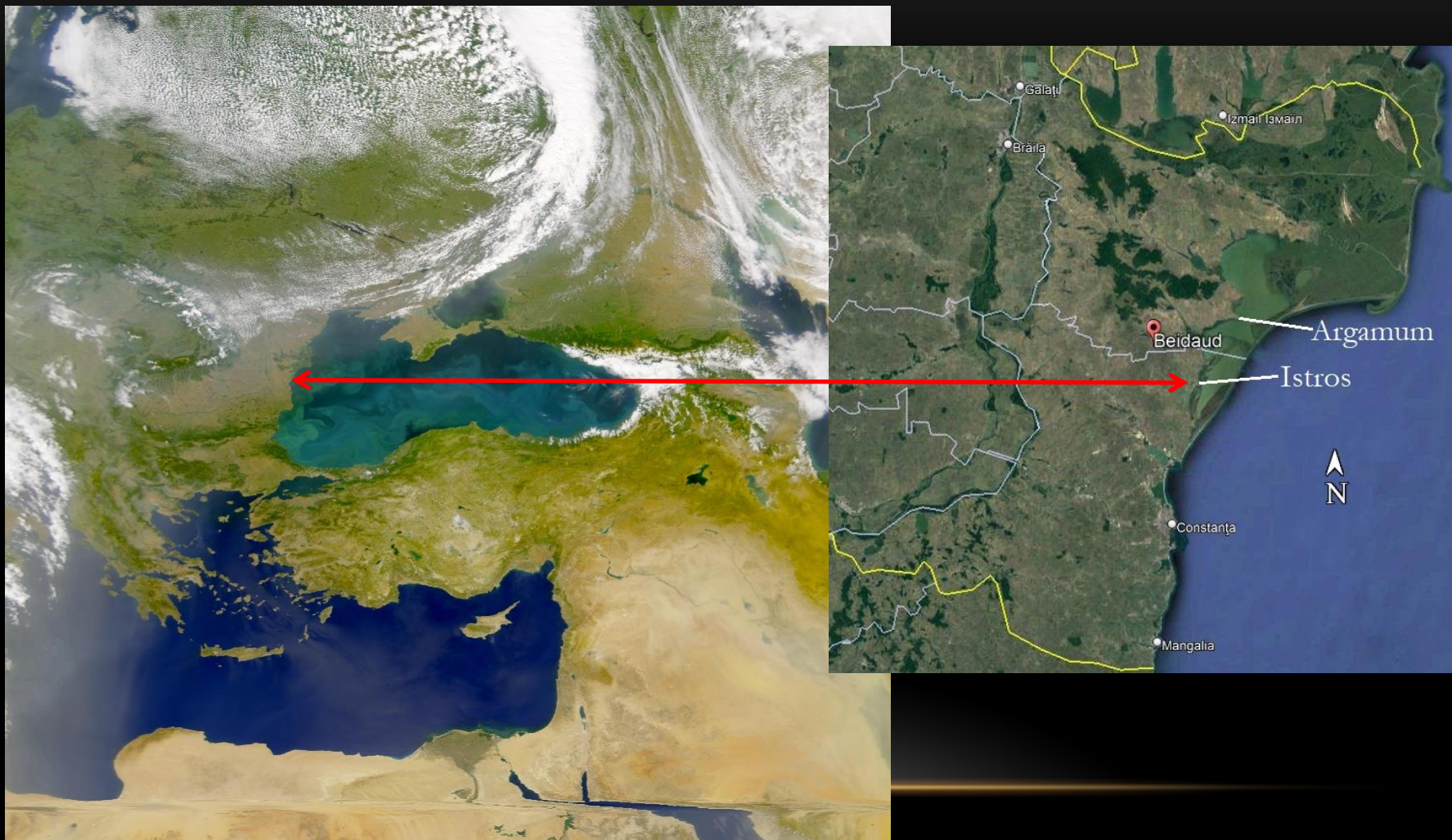
*

THREE UB RESEARCH PROJECTS

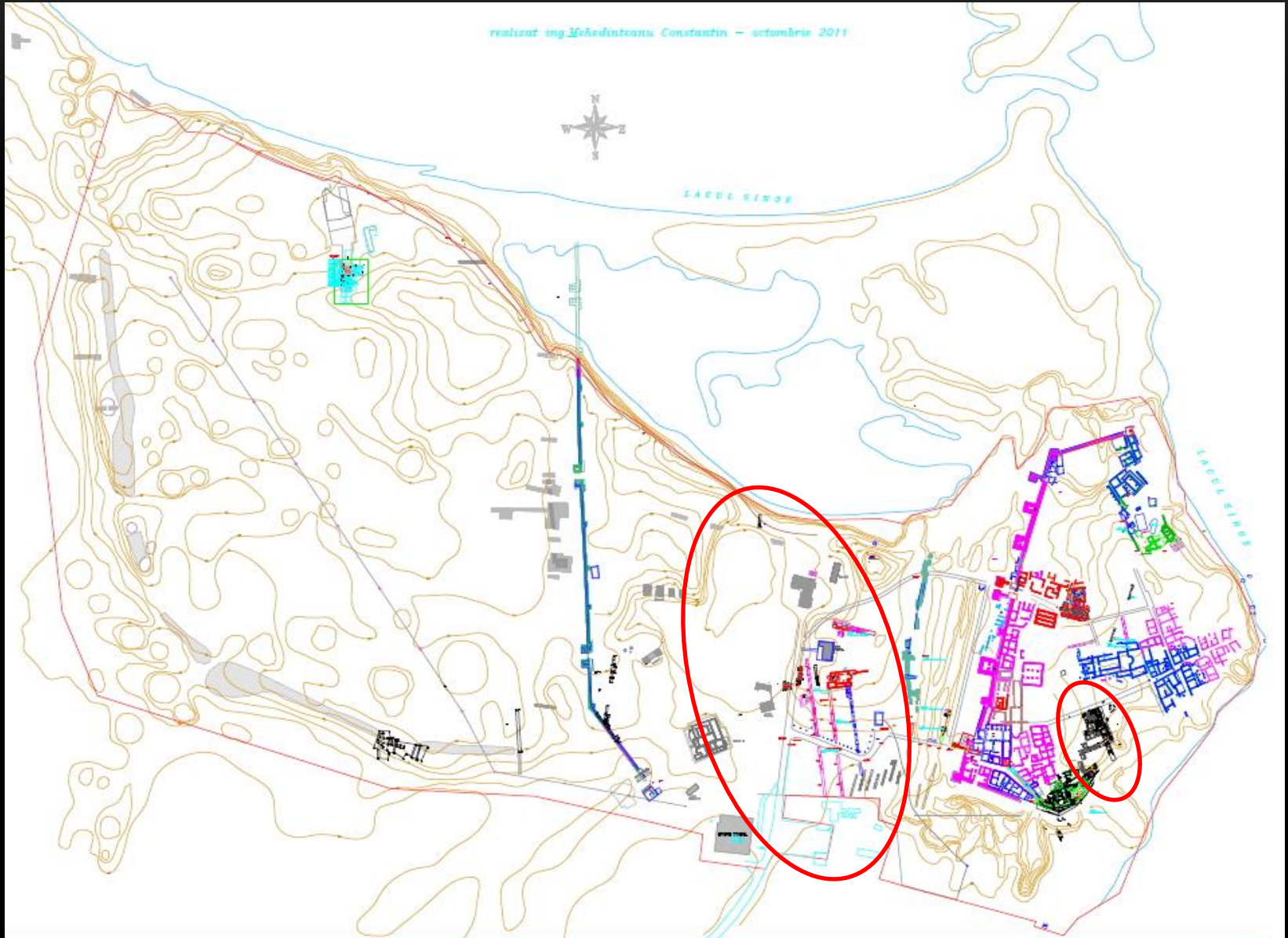


Valentin Bottez, "Dinu Theodorescu" Laboratory of Archaeology,
Faculty of History, University of Bucharest

LOCATION OF *ISTROS* AND *BEIDAUD*



LOCATION OF THE TWO RESEARCH POINTS



I. The *ACROPOLIS CENTRE-SOUTH (ACS) Project*

- initial project (2013-2016)
 - developed projet (2017-2022)
 - context: establishing a research team from the University of Bucharest
 - financed by the University of Bucharest
-

THE TEAM

Main team

University of Bucharest



Collaborations – Institute of Archaeology, Museum of National History and Archaeology in Constanța

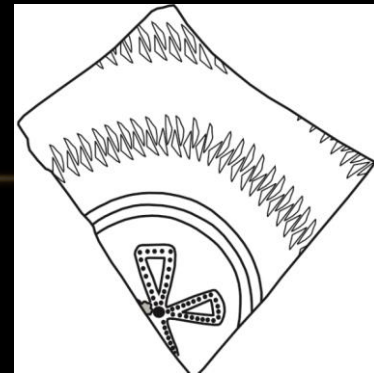
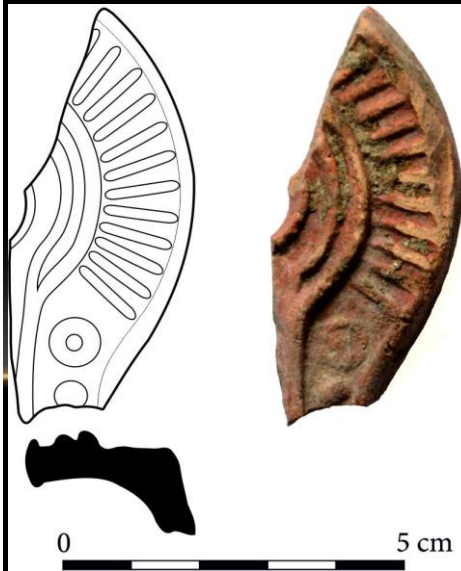
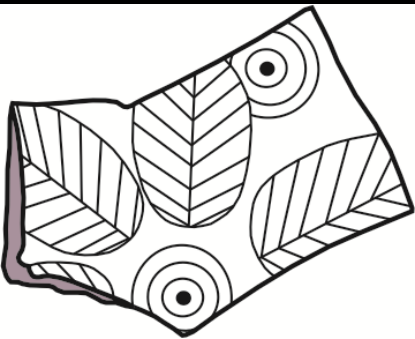
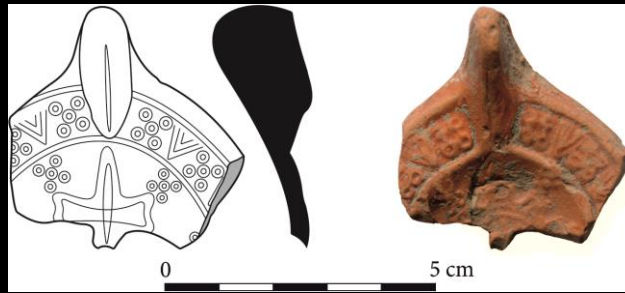
Students directly involved in research

EPIGRAPHIC DISCOVERIES



POTTERY - PRELIMINARY RESULTS

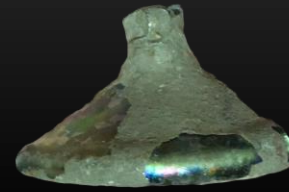
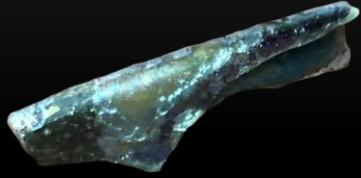
- chronological variation
- amphoras, cooking and table ware, lamps
- Oriental, North African and Pontic



ARCHAEOZOOLOGY



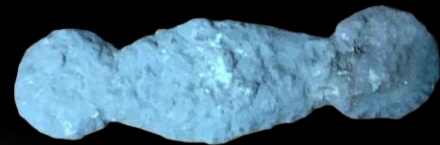
GLASS OBJECTS



COINS



SMALL FINDS



THE RESULTS

Late Roman *insula* (6th – 7th c. AD)

2 nuclei



THE ACROPOLIS CENTRE-SOUTH (ACS) SECTOR



- *insula* aligned to street C

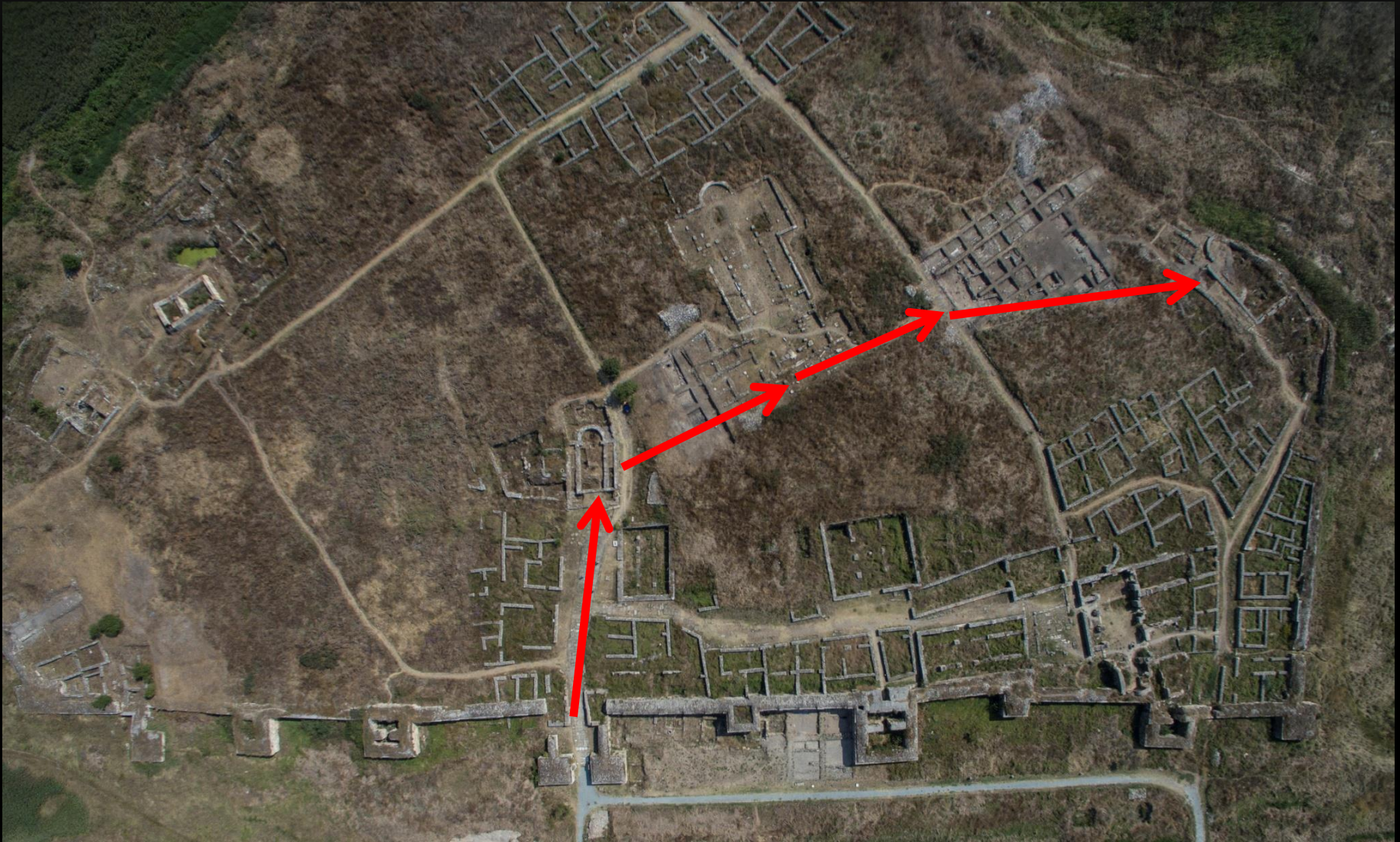
- street to the E

- street to the W

- change of direction of the western street (jagged pattern)

CHANGE OF TRAJECTORY OF THE WESTERN STREET

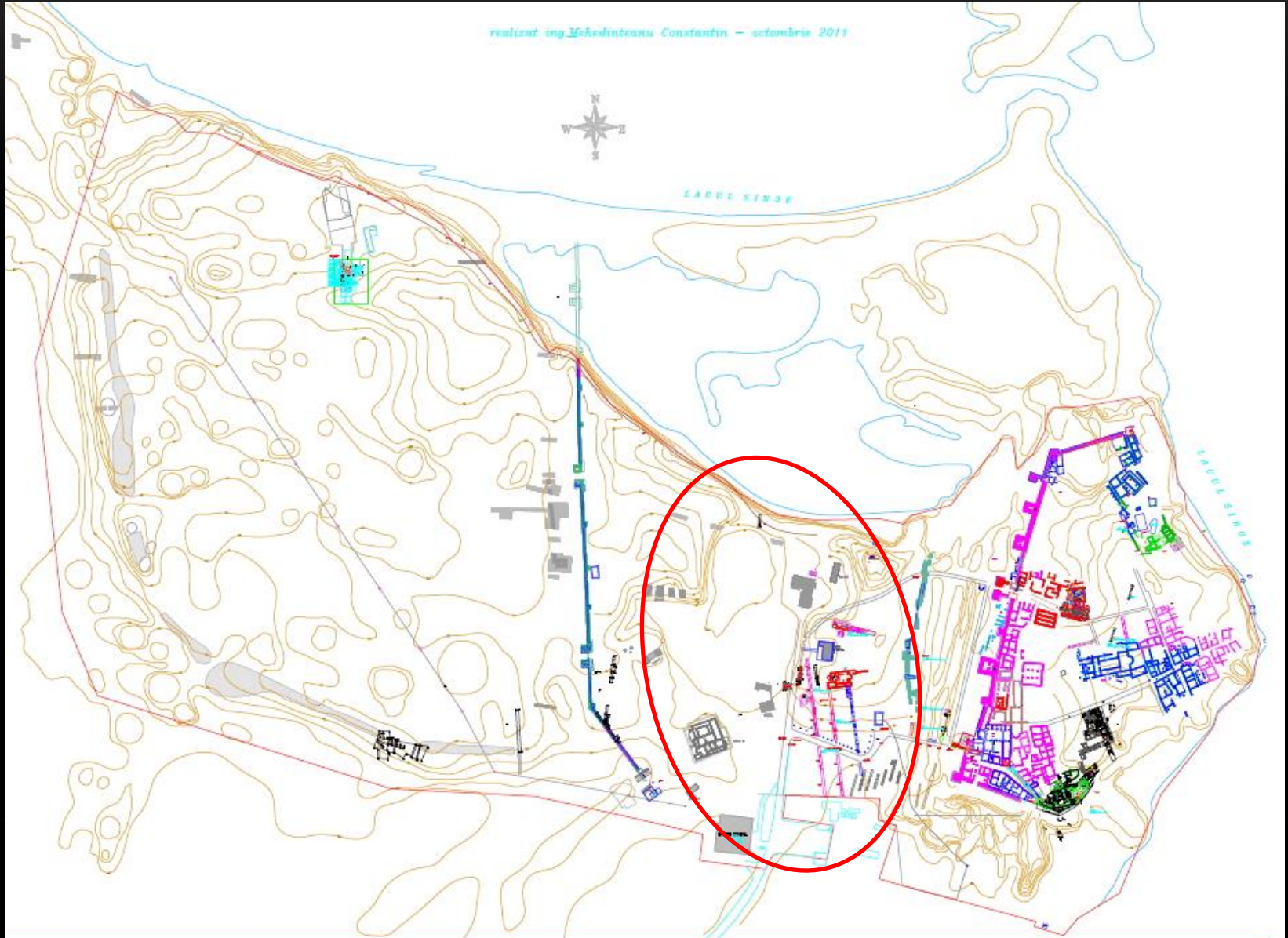
- N-S privileged itinerary
- connection of the new ecclesiastic monuments = focal points
- implementation of Christian urban plan



II. THE ANCIENT HARBOUR PROJECT

- initial project : *AMIDEX-GEOMED* (four cores in 2015)
- Principal project : *COFUND DOC2AMU Environmental Change and Geoarchaeology in the Danube delta since 6000 yrs* (25 cores in 2017; geophysical and archaeological research in 2017 and 2018)
- context: collaboration University of Bucharest – Aix-Marseille Université
- financed by Aix-Marseille Université and the University of Bucharest

THE ANCIENT HARBOUR PROJECT



MAIN OBJECTIVES

- identifying the environmental changes in the Istrian landscape
- identifying the location of the harbour(s)



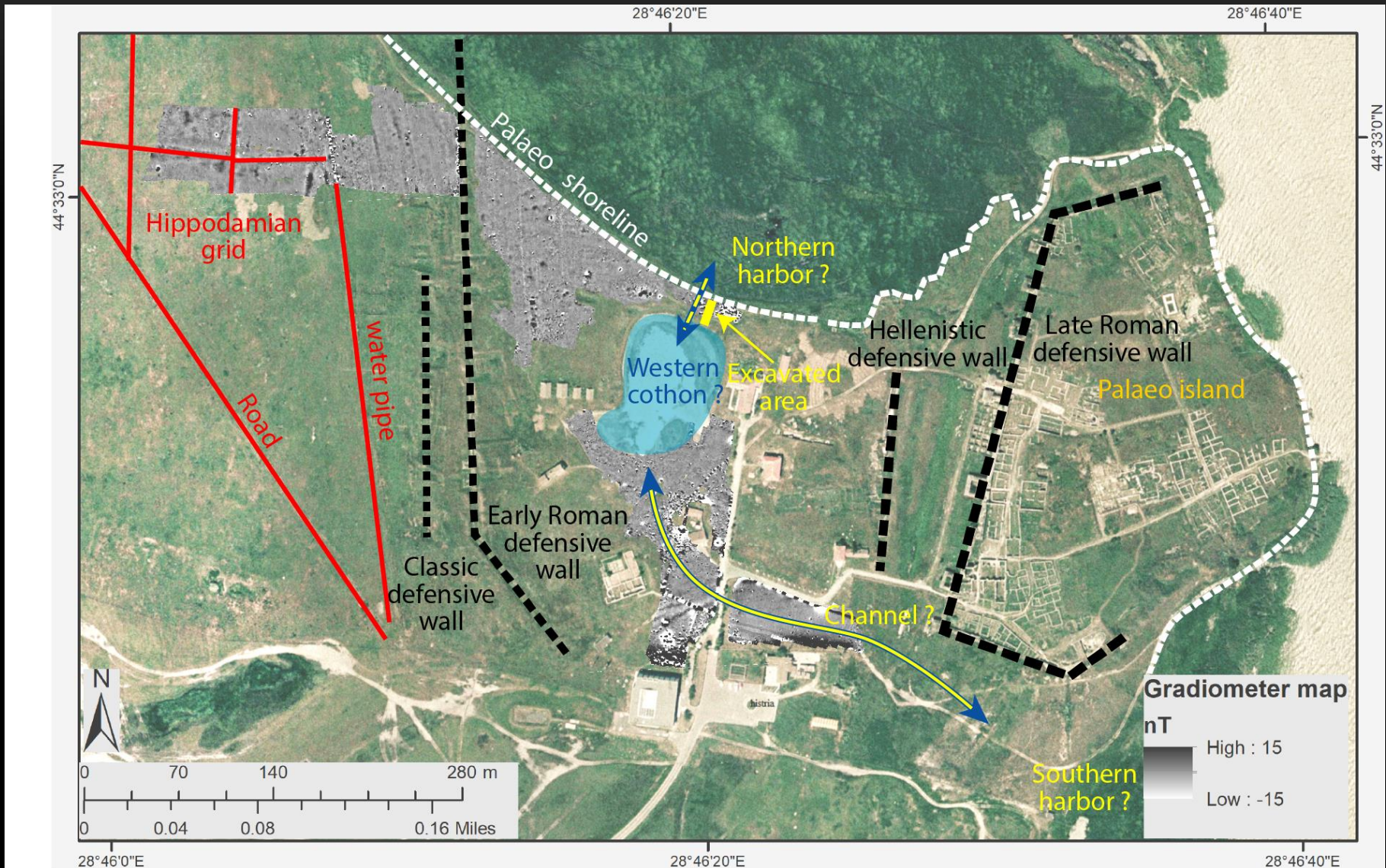
THE TEAM

- AMU and UB

- Collaborations: IFIN, IAB



THE RESULTS: THREE HARBOUR BASINS?



BEIDAUD : location and historical context

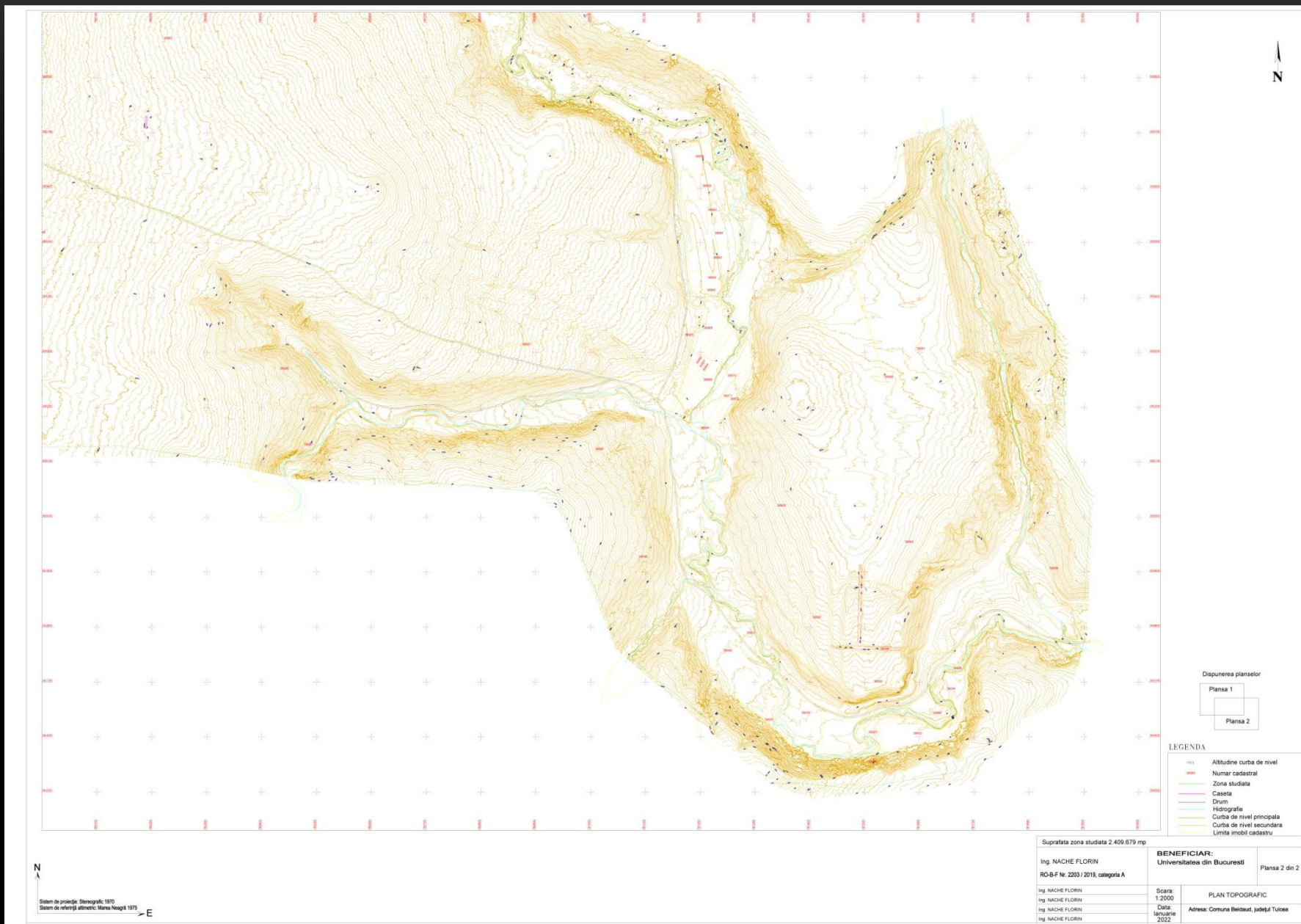


BEIDAUD : THE TEAM

- UB (FI; FG; FGG)
- ICEM Tulcea
- IAB
- AMU (ARKAIA)
- UTA
- PSU
- ENS

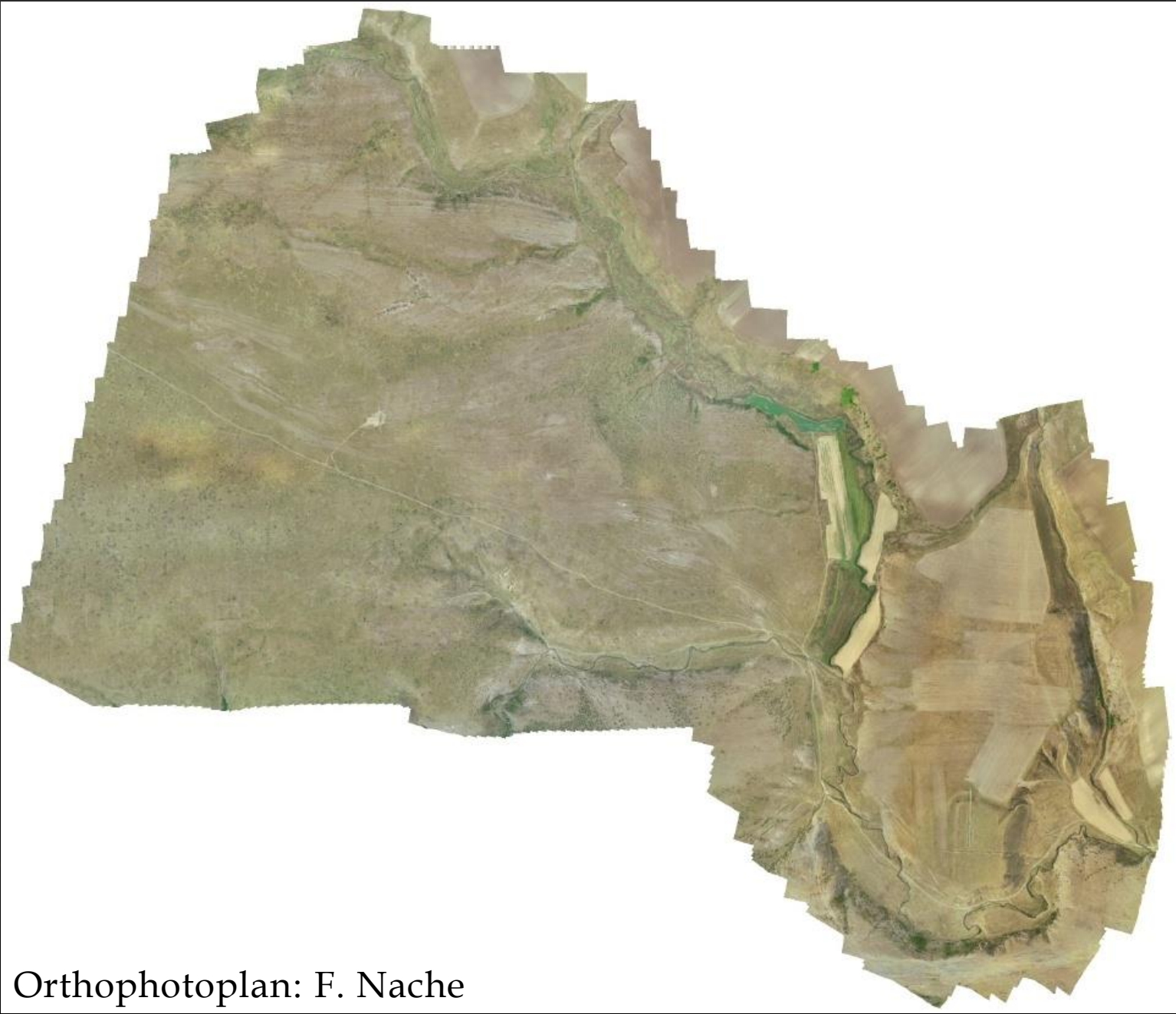


THE RESULTS: TOPOGRAPHIC MAP



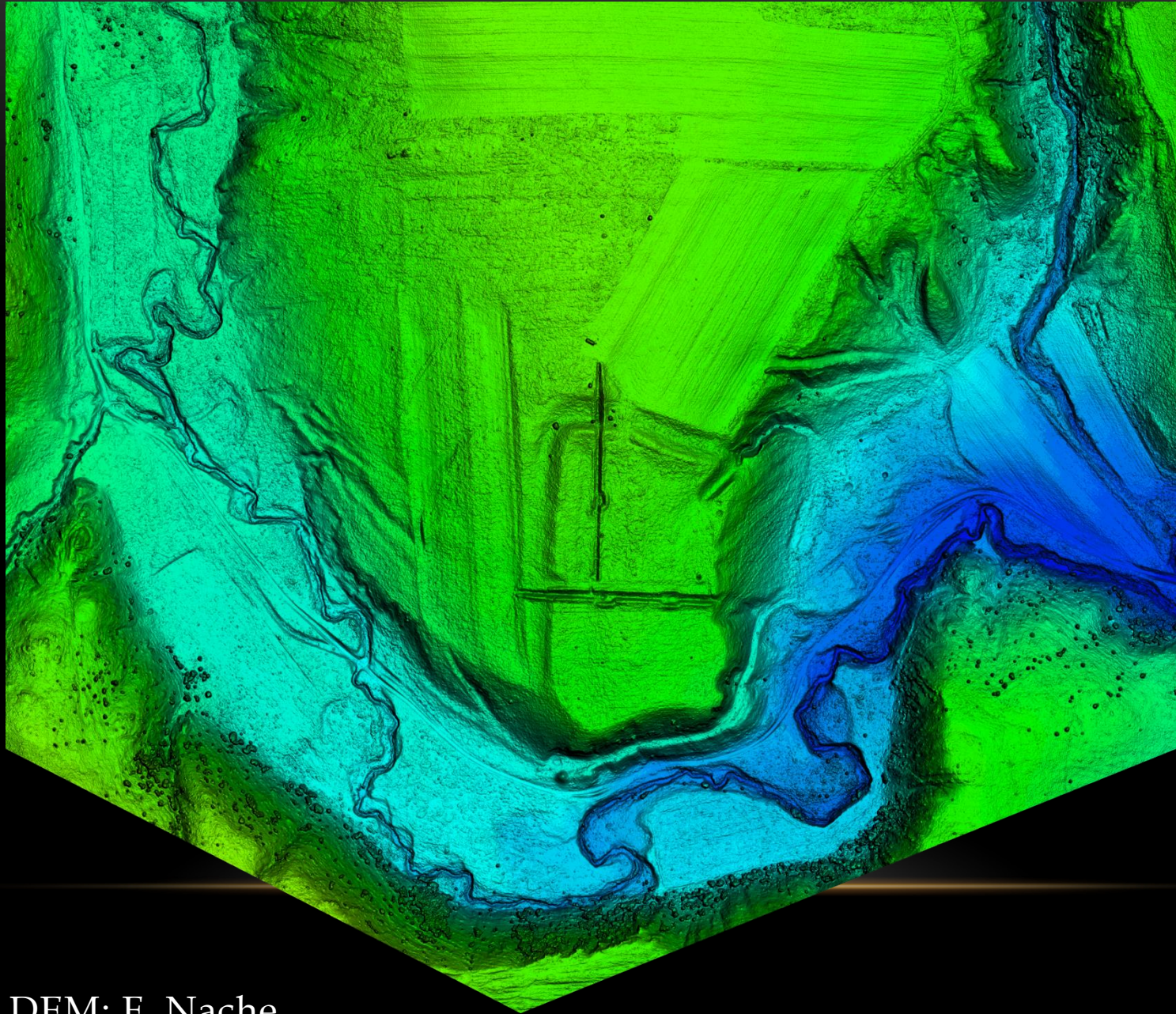
Topographic map: F. Nache

THE RESULTS: ORTHOPHOTOPLAN



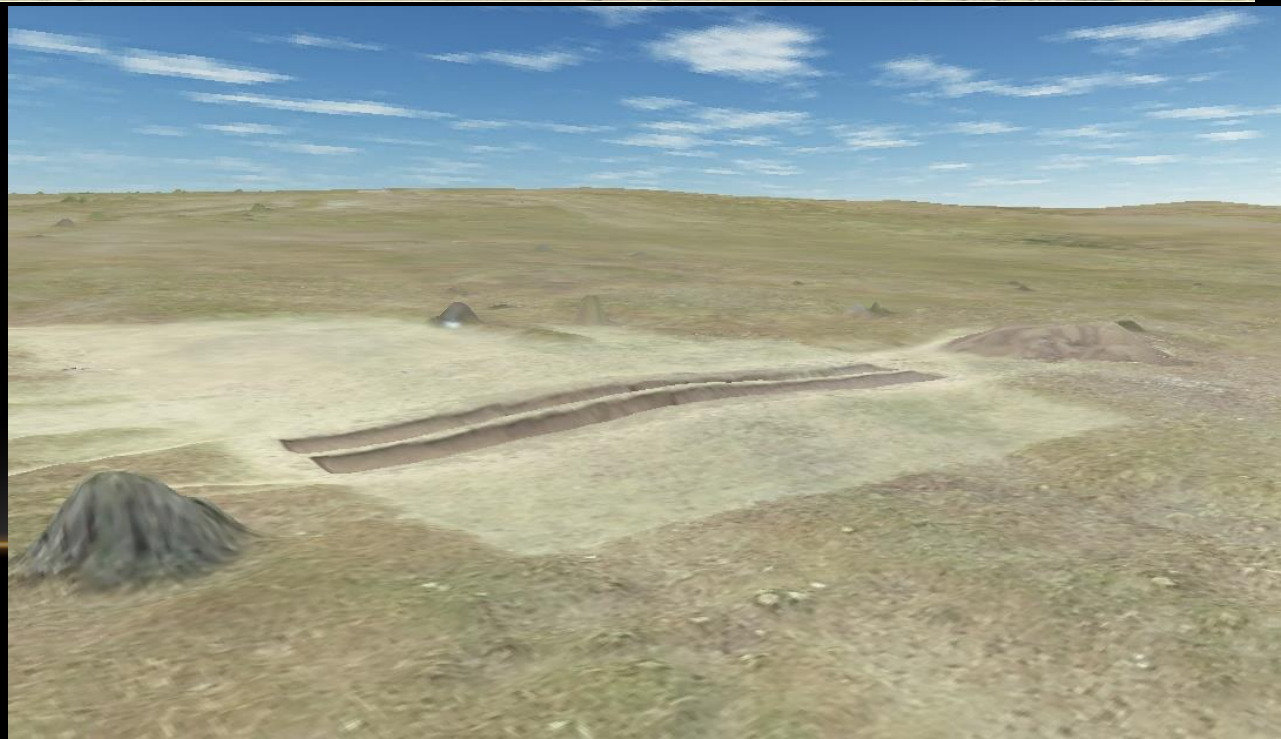
Orthophotoplan: F. Nache

THE RESULTS: DEM



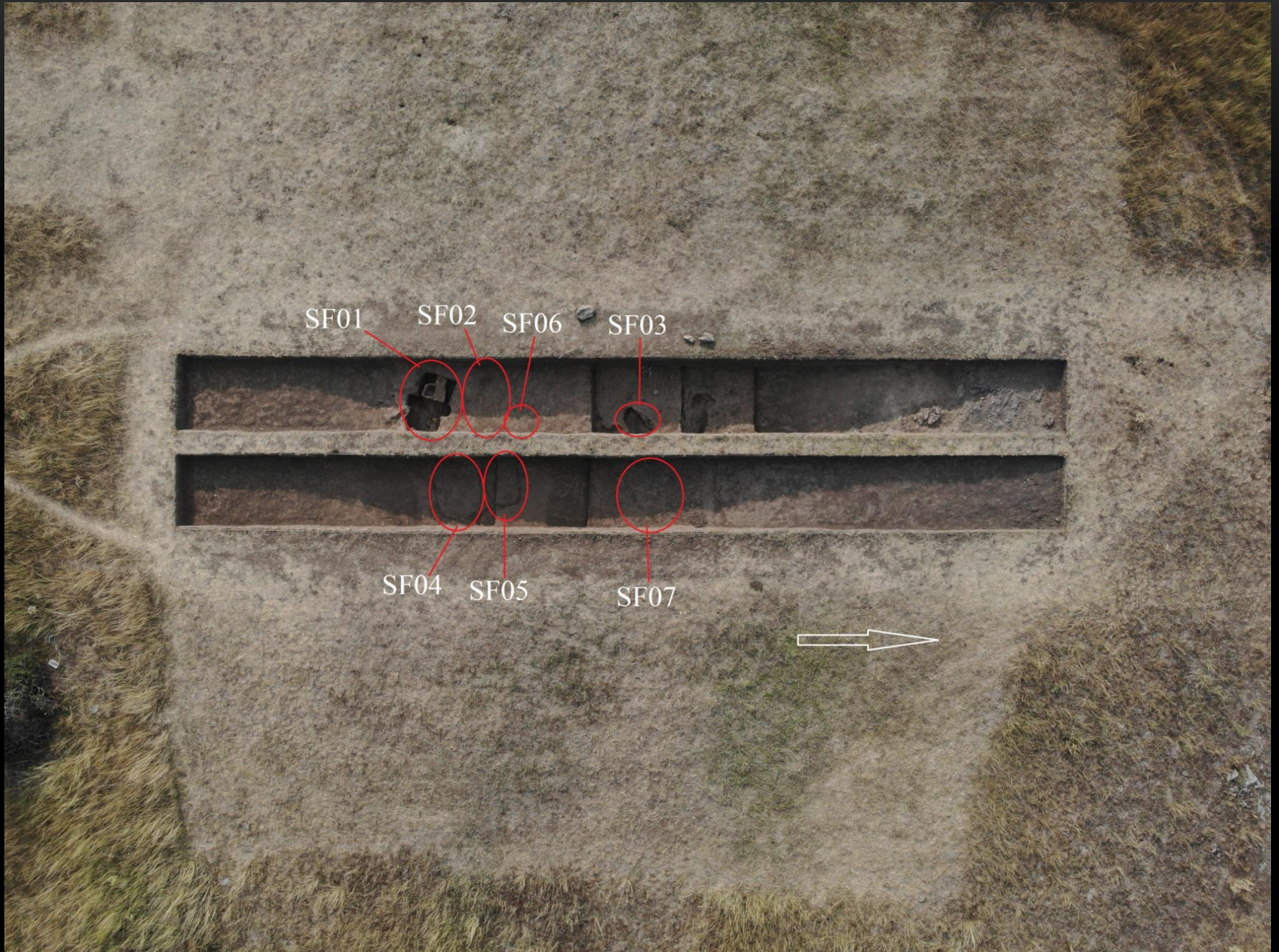
DEM: F. Nache

THE RESULTS: 3D MODEL

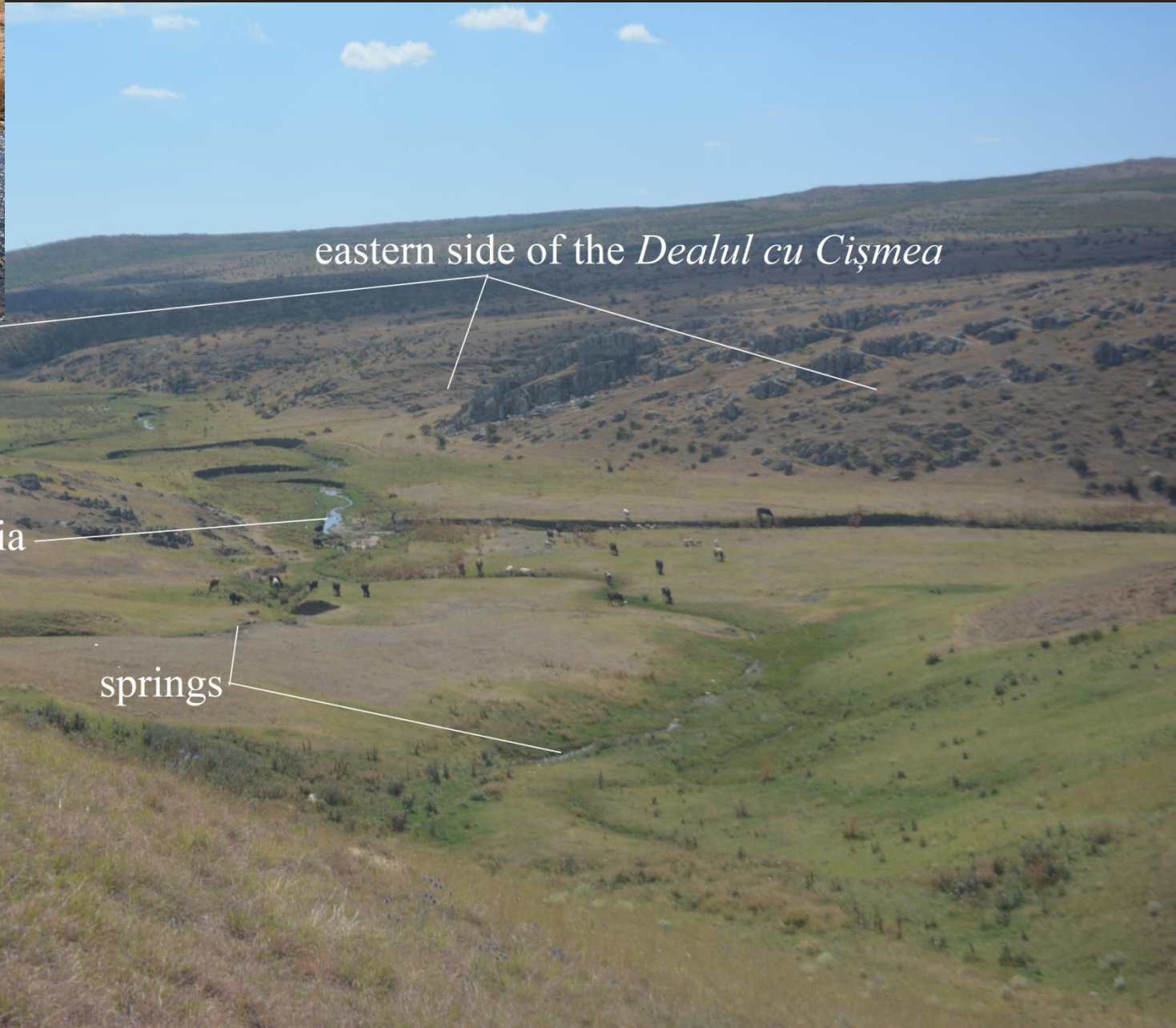


3D captions: F. Nache

THE BEIDAUD PROJECT - THE RESULTS



BEIDAUD : Sr and O isotopes analysis



eastern side of the *Dealul cu Cişmea*

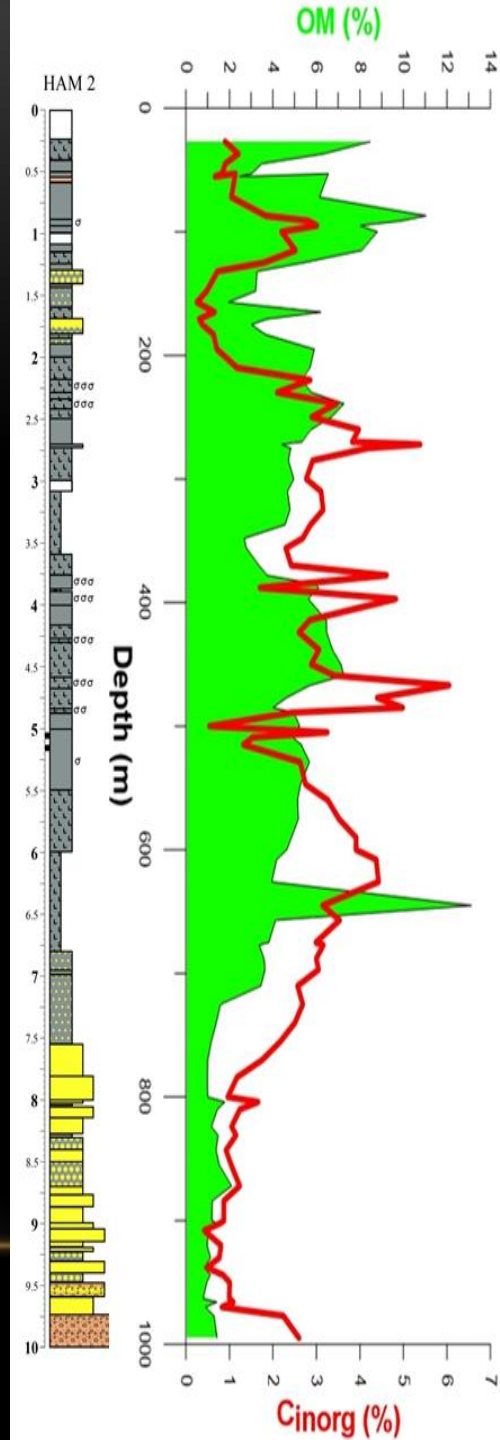
Hamangia

springs

BEIDAUD : geoarchaeological research

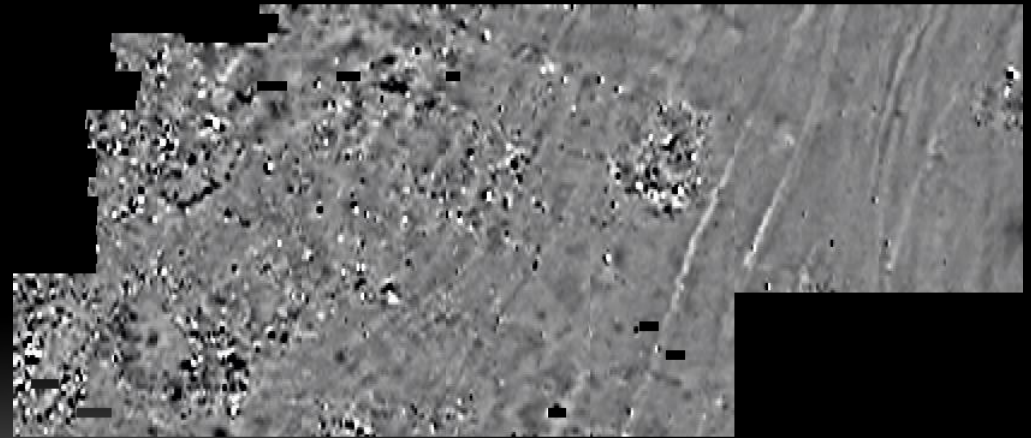
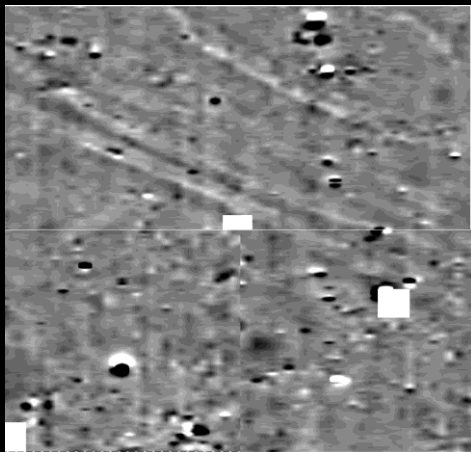
- 7 stratigraphic units

- units C and D: Holocene



Illustr.: A. Vespremeanu-Stroe

BEIDAUD : geophysical research



THANK YOU FOR YOUR ATTENTION!



VĂ MULȚUMIM PENTRU ATENȚIE!